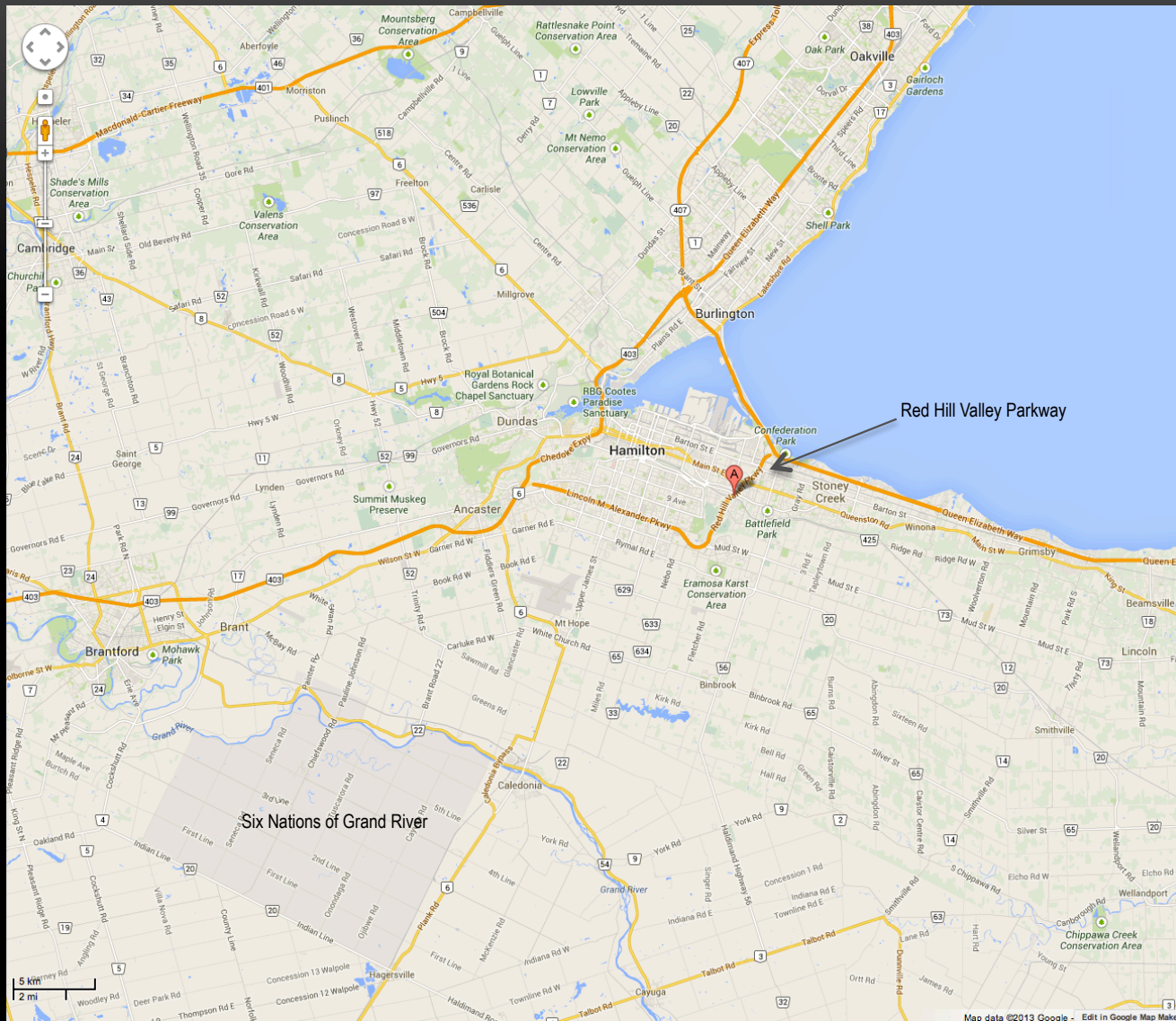


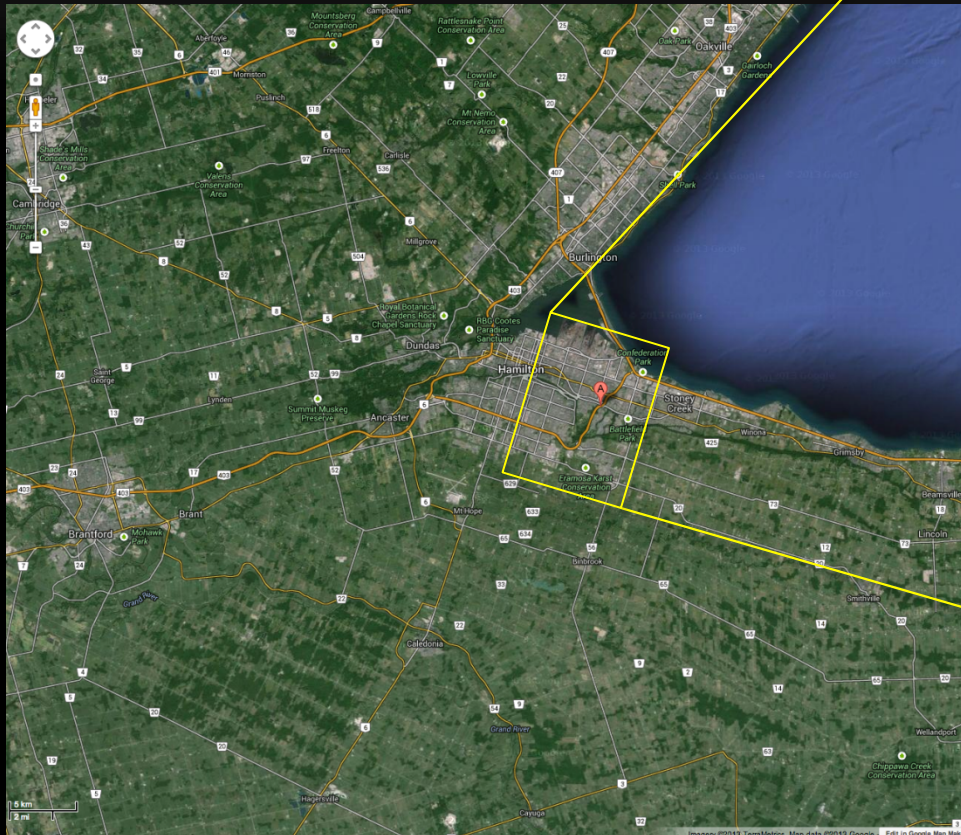
The **purpose** of this brief presentation is to:

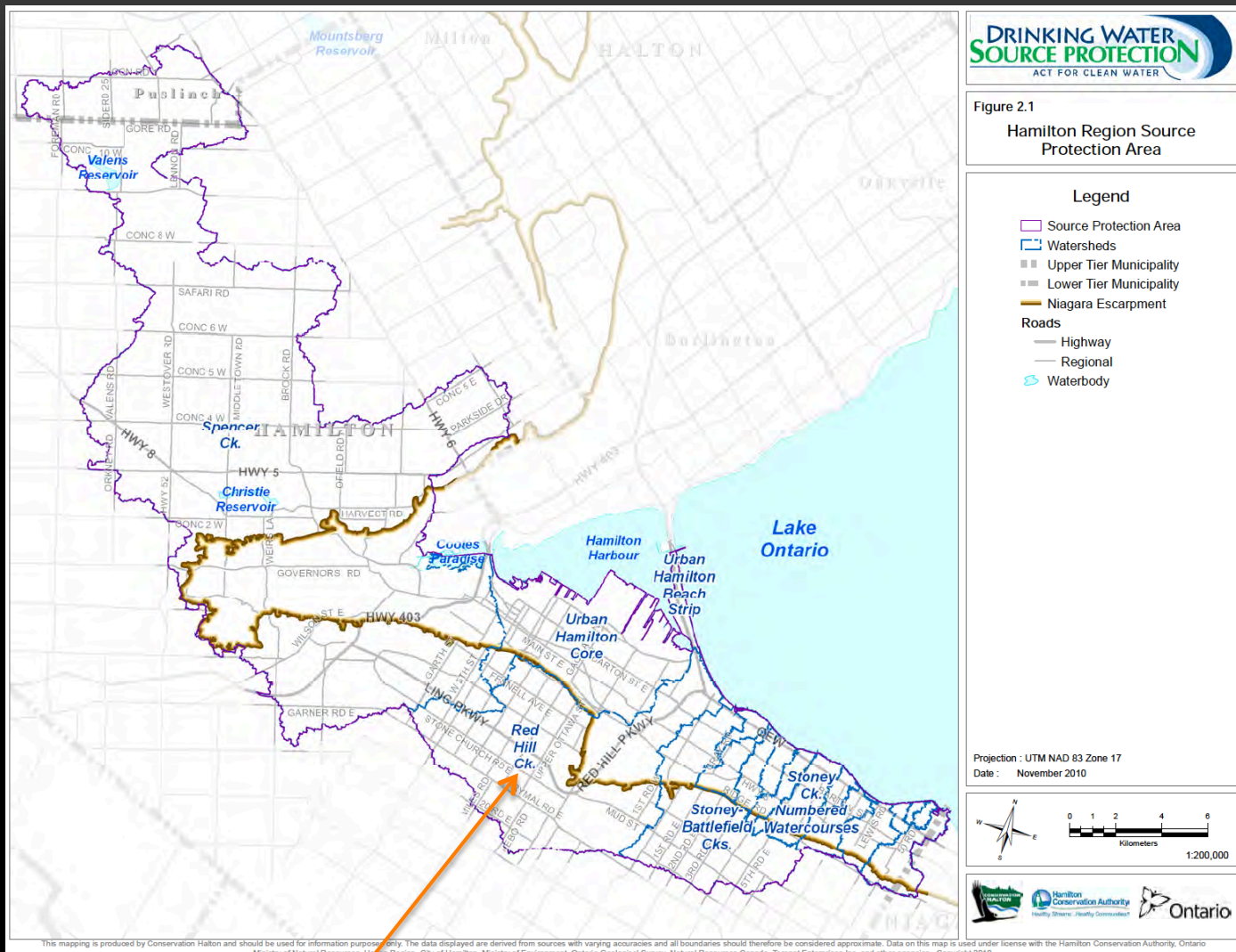
- Provide context and visuals for our discussions
- Show location and update on Meeting Places
- Seek further direction re: Interpretive Signs/web

GENERAL AREA



RED HILL CREEK AND VALLEY





PART OF THE RED HILL CREEK WATERSHED

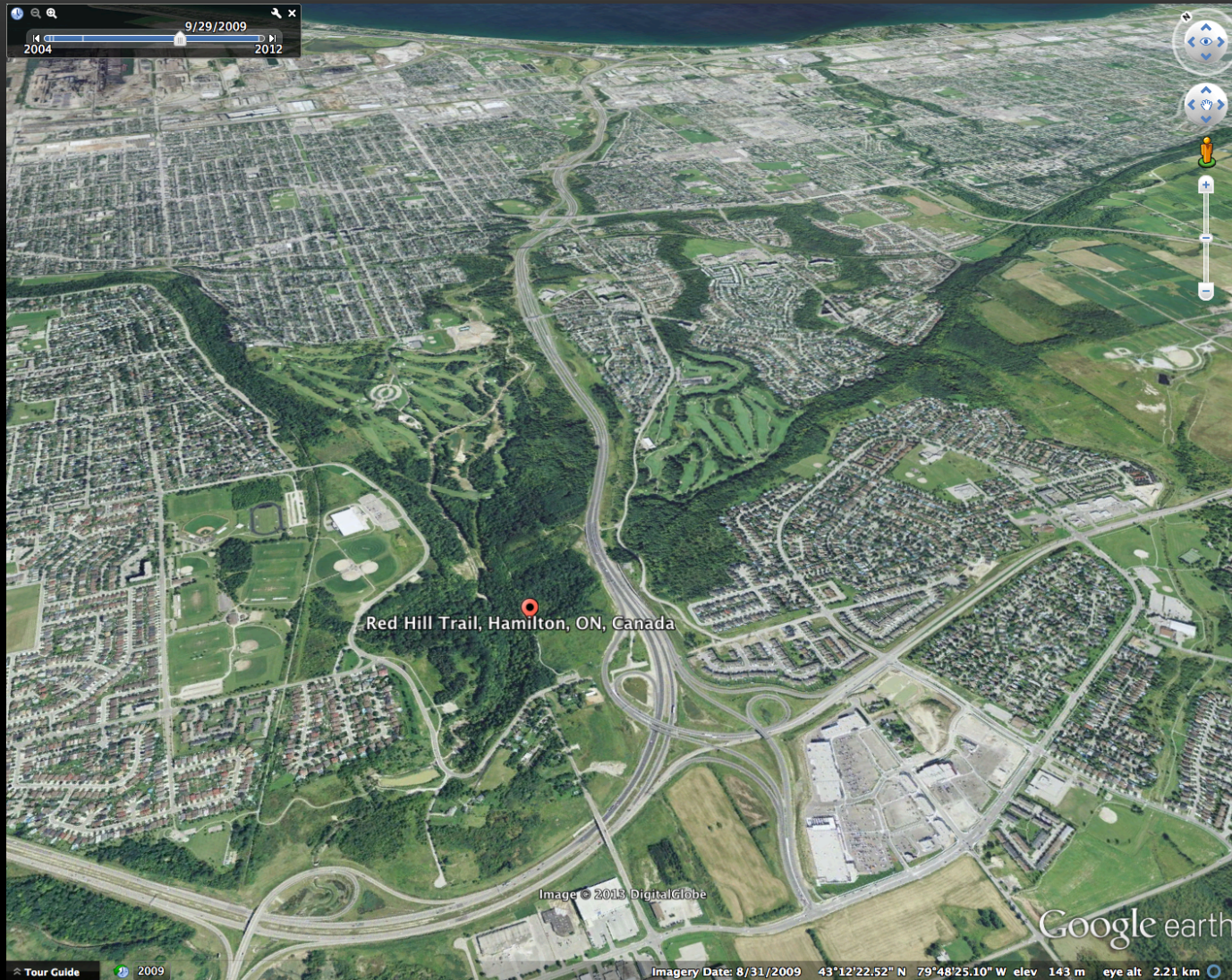
2012

North



2009

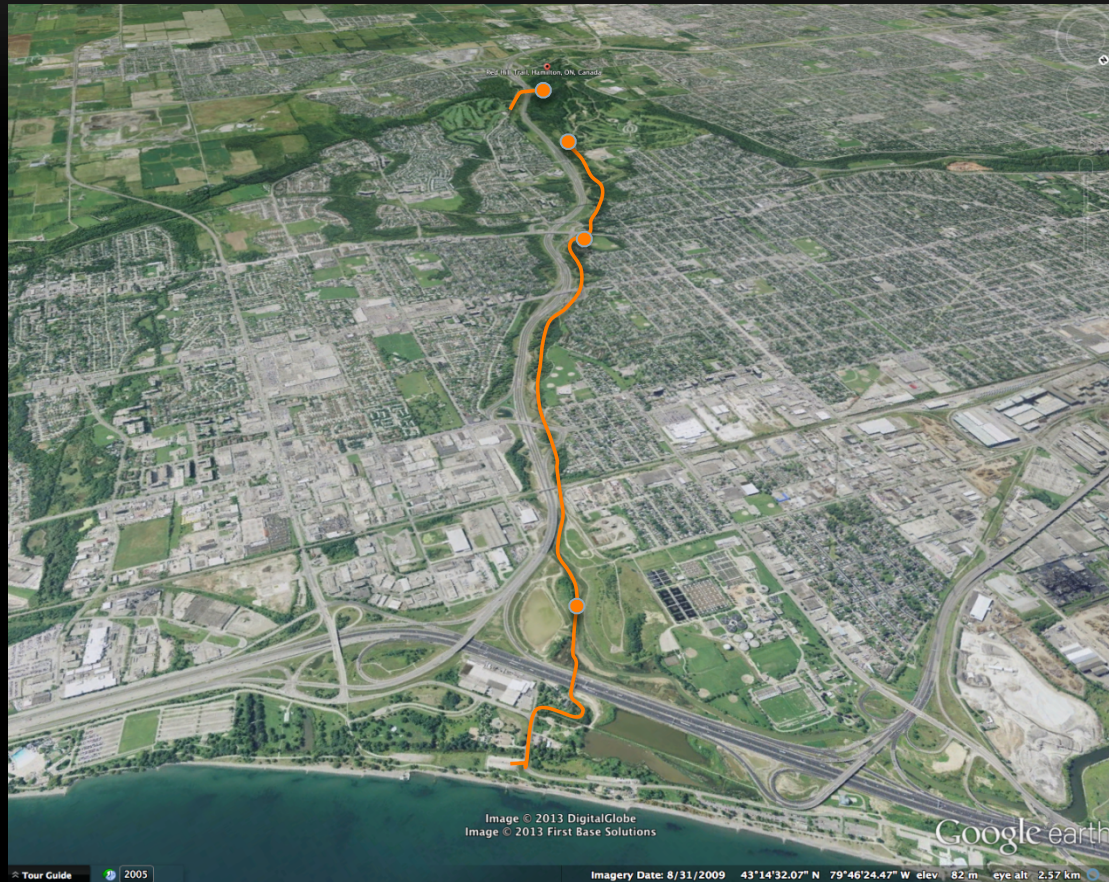
North



MY VISIT – SEPT 6, 2013

- Starting at the lake and heading south

North
↓



TRAILS AND MEETING PLACES

EXPLORE · ENJOY · DISCOVER

The Red Hill Valley is a significant natural open space that spans Hamilton's landscape from the Niagara Escarpment to Lake Ontario. Home to rare species such as the Coopers Hawk, Soapberry Tree, and Southern Flying Squirrel, the Valley is an important natural habitat for diverse species of animals and plants. Its archaeological artifacts are twice as old as Stonehenge and the Egyptian pyramids, dating back 11,000 years.

Learn more at hamilton.ca/rhvp
or jointstewardshipboard.com

MEETING PLACES



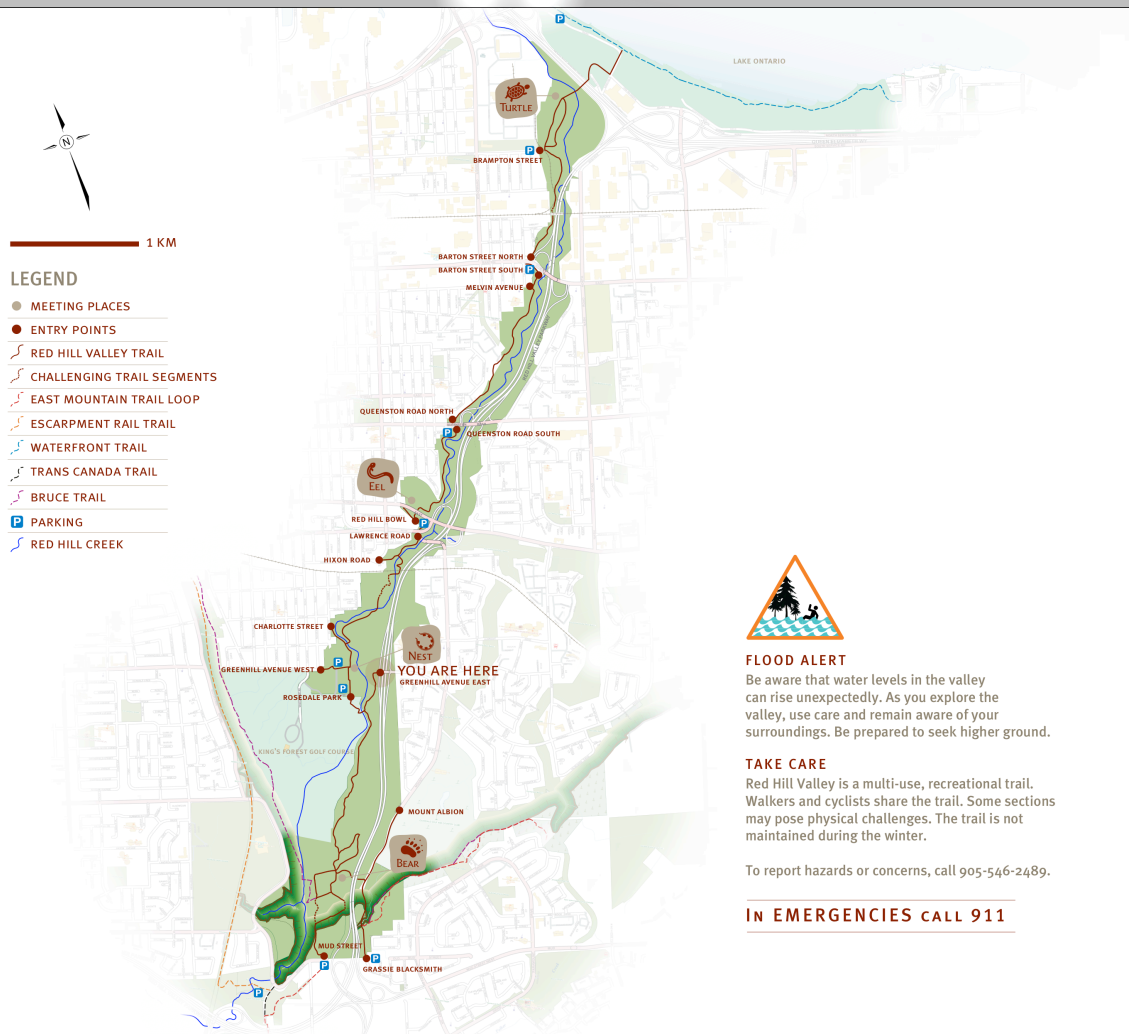
Take only photos. Leave only footprints.
Please stay on the trail.



1 KM

LEGEND

- MEETING PLACES
- ENTRY POINTS
- RED HILL VALLEY TRAIL
- CHALLENGING TRAIL SEGMENTS
- EAST MOUNTAIN TRAIL LOOP
- ESCARPMENT RAIL TRAIL
- WATERFRONT TRAIL
- TRANS CANADA TRAIL
- BRUCE TRAIL
- P PARKING
- RED HILL CREEK



FLOOD ALERT

Be aware that water levels in the valley can rise unexpectedly. As you explore the valley, use care and remain aware of your surroundings. Be prepared to seek higher ground.

TAKE CARE

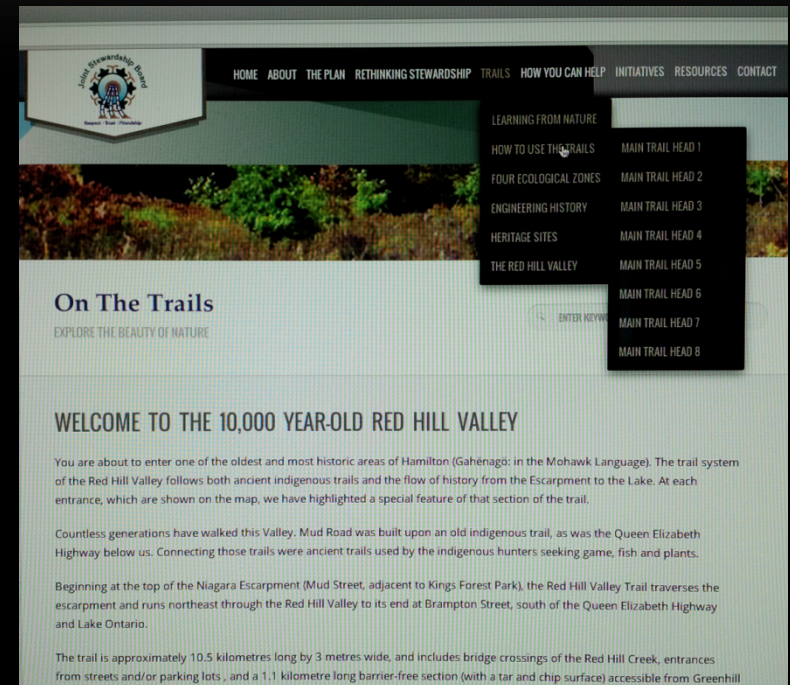
Red Hill Valley is a multi-use, recreational trail. Walkers and cyclists share the trail. Some sections may pose physical challenges. The trail is not maintained during the winter.

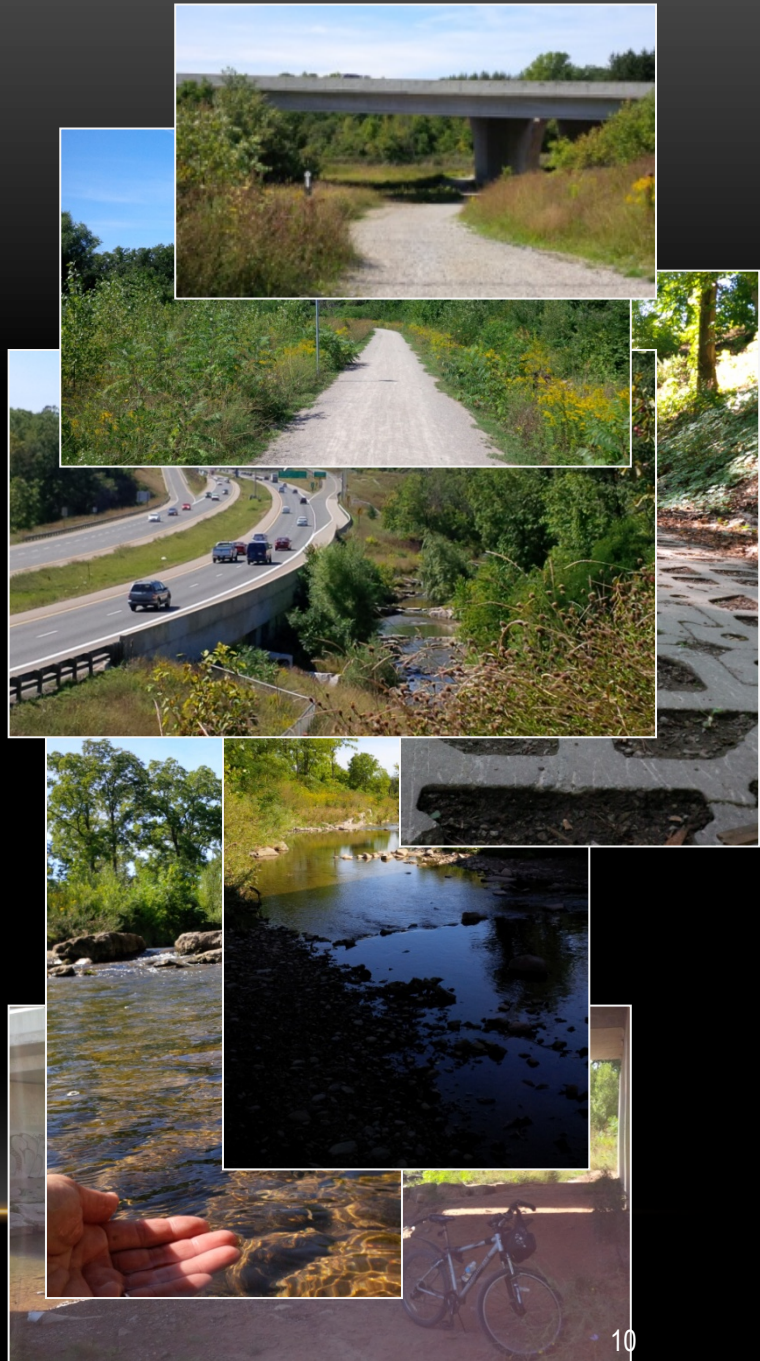
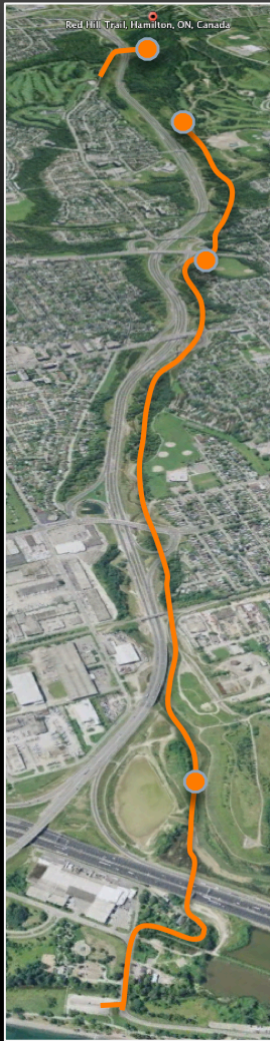
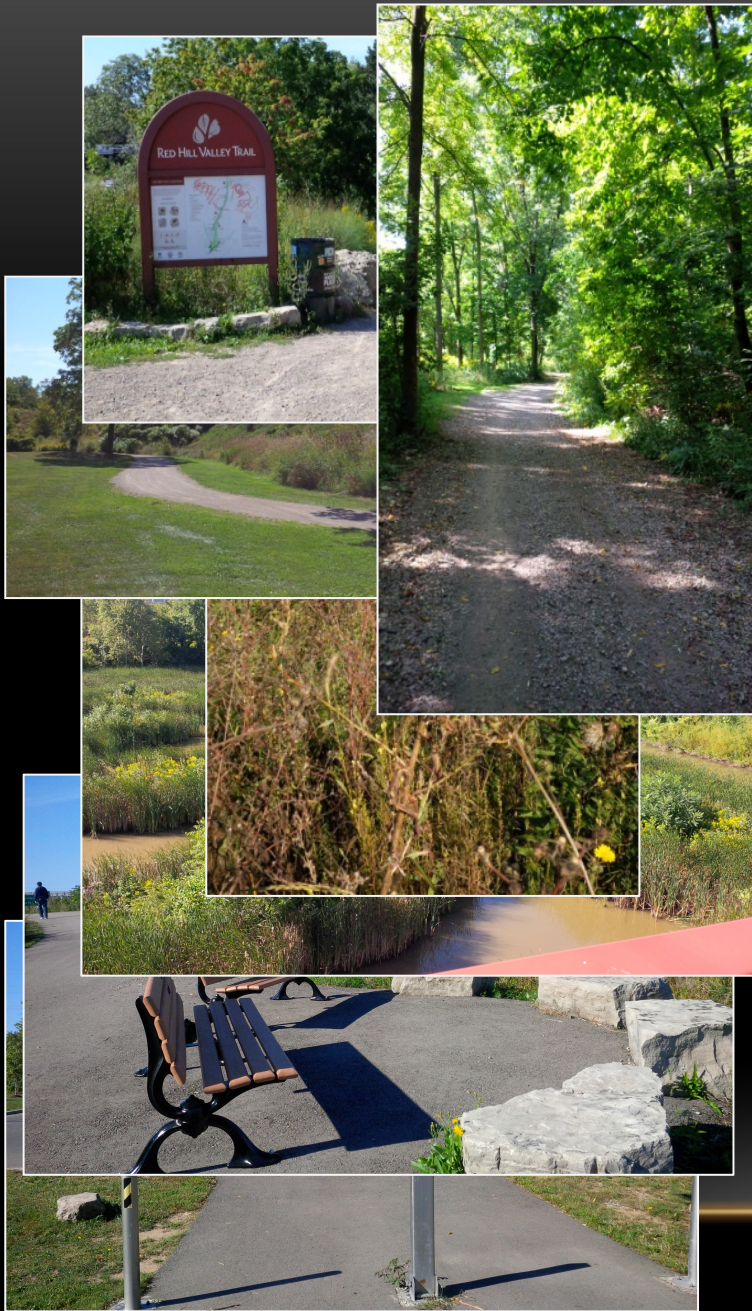
To report hazards or concerns, call 905-546-2489.

IN EMERGENCIES CALL 911

TRAILS PROJECT - BACKGROUND

- 2006 work began on interpretive trail system
- To provide visitor with factual information
- Include history, RHV project, and Haudenosaunee story
- Rethinking history and the impact of humans on environment
- To help visitors become stewards of cultural landscape
- Original concept site involved: ID sign, interpretive sign, photos and descriptions
- Concept evolved to internet/web site based approach





TRAIL ENTRANCES



RED HILL VALLEY TRAIL

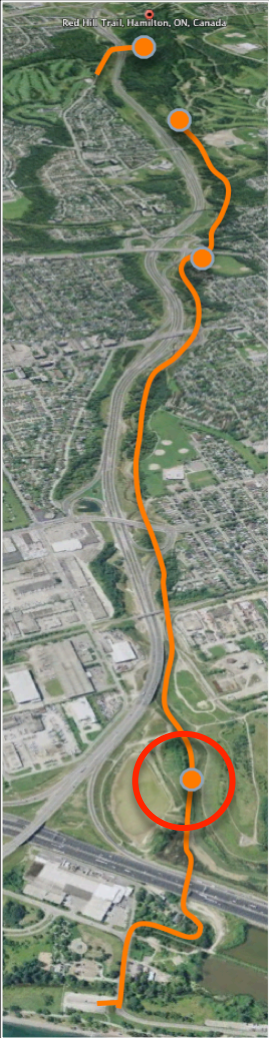


14-01-28



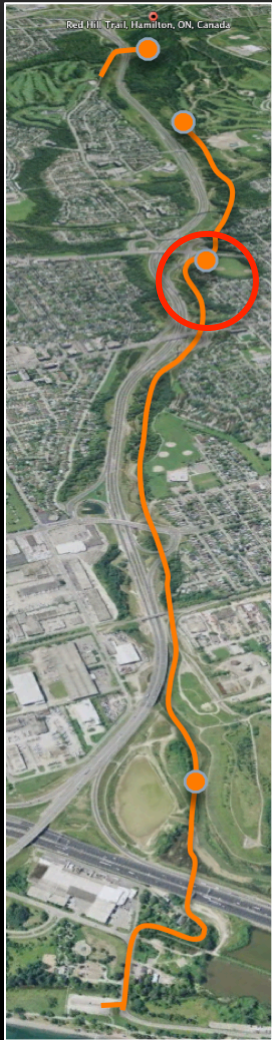
TURTLE MEETING PLACE

- Proposed location



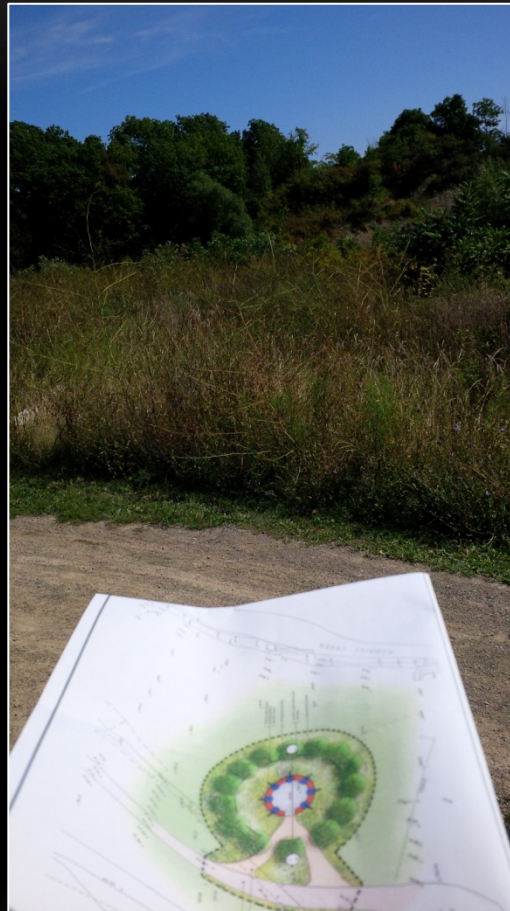
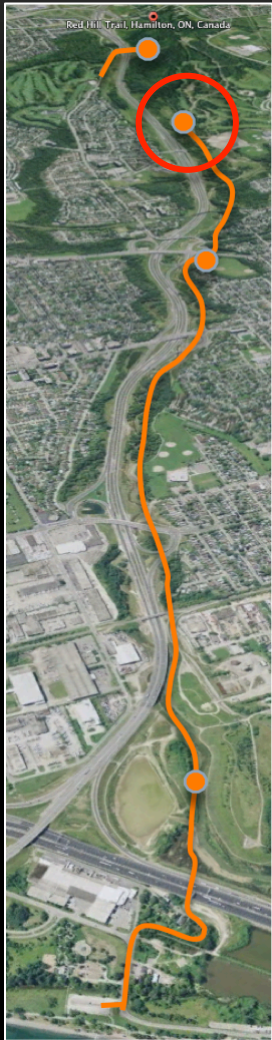
EEL MEETING PLACE

- Proposed location

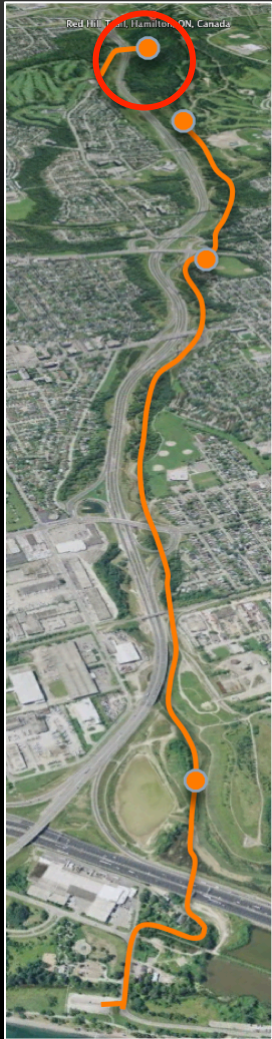


NEST MEETING PLACE

- Proposed location



BEAR TRACK MEETING PLACE



BEAR TRACK UPDATE

- Cedar Springs Landscape Group
 - Construction mobilization on September 30, 2013
 - Verify location and layout (week of Sept 20 – 27th)
 - Estimated completion – November 1, 2013
 - Presentation by COH – November 21, 2013 JSB meeting --> future places
-
- Kayanase asked about “native plants” → should they be involved? How?
 - Does the HCCC and/or COH wish to have public opening?
 - Signage at this site?

