

Red Hill Valley

Environmental Interpretation Centre
Final Presentation January 9, 2014



Joint Stewardship Board



Schematic Design

1

VISIONING SESSION

- Idea Forum
- Opportunities/Challenges
- Ideal Program
- Design Principles/ Collective Vision

2

DESIGN WORKSHOP

- Meeting with all key stakeholders
- Review design principles with larger group
- Review programmatic and site issues
- Understand functional relationship
- Establish contextual relationships

3

CONCEPTUAL DESIGN

- Prepare “bubble diagram/schematic design”
- Locate building on the site
- Confirm/prepare program area summary (ie. building size)
- Begin building massing study
- Sign-off

Vision



- **ONE**

We inherit a responsibility to make decisions on behalf of the coming faces, so that they may enjoy what we have today.

- **TWO**

By better understanding our past and our present, we prepare for a resilient future.

- **THREE**

By building emotional connections to the land and each other, we can be part of something good in the future.



Design Principles



- **ONE** - Project will provide a framework that will awaken our past connection to the land and accommodate a shift in thinking toward a new, enlightened awareness our place in the world.
- **TWO** - To create a place that is truly connected to the site and is integrated with the natural patterns it embodies as an immersive learning environment.
- **THREE** - The building will tell a story about the history of the valley, the cultural relationship with the land and our future responsibilities to the coming faces.
- **FOUR** - Spaces (interior and exterior) will be multi-sensory, designed to enable and engage people both physically and emotionally.
- **FIVE** - The project will be dynamic and adaptable with a responsible use of available resources and materials.



Program



EDUCATIONAL PROGRAMMING.....(1,200 sqft)

- Schools / Camps
- Crafts
- Class

EXHIBITION SPACE.....(1,200 sqft)

- Art Gallery
- Historical Display
- Artifacts

RECREATION & GATHERING.....(2,500 sqft)

- Teaching
- Gardens
- Festivals / Ceremonies

INTERACTIVE/DIGITAL.....(600 sqft)

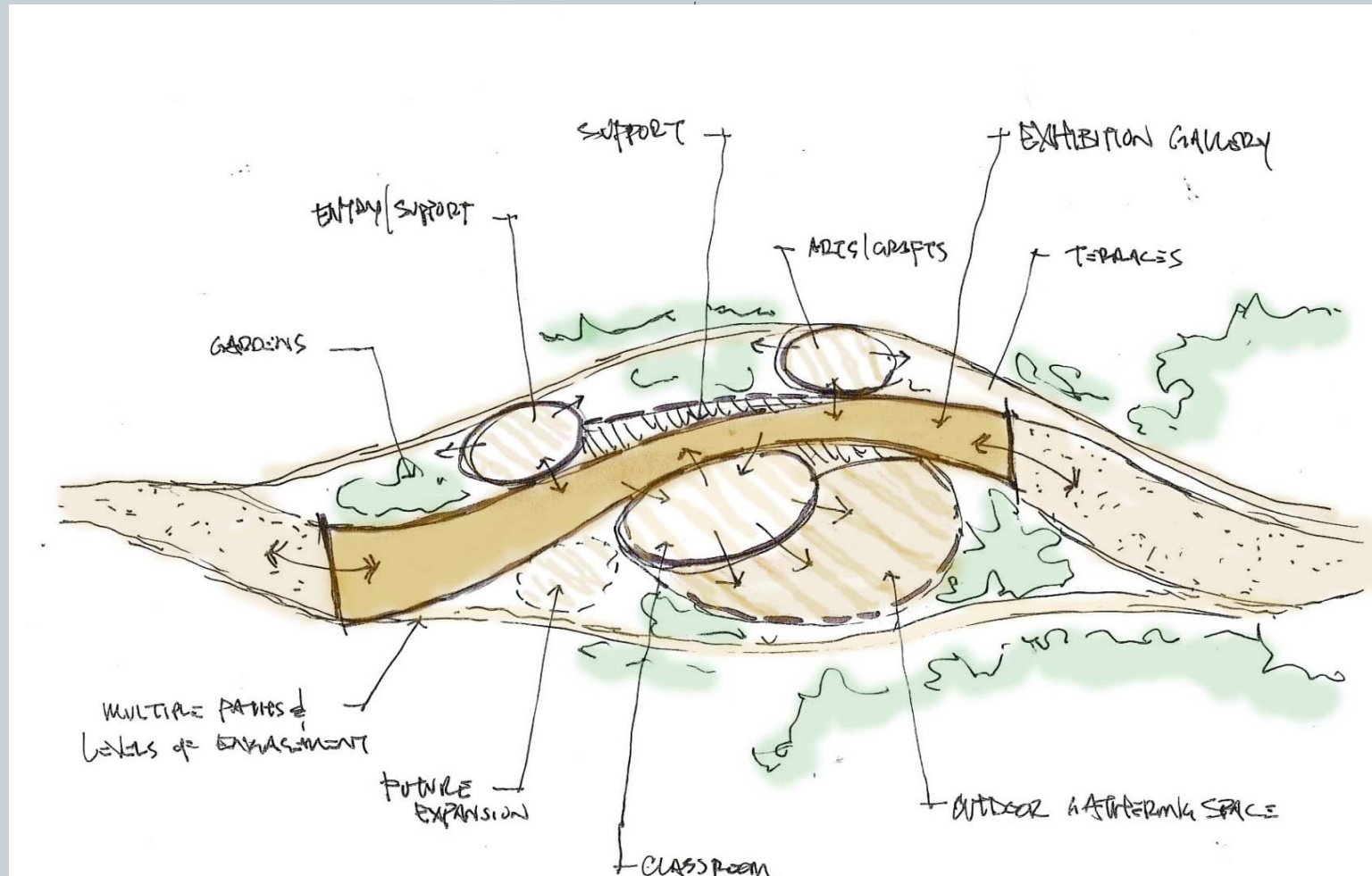
- Website / Blog
- Digital Display
- Resources

Ancillary Support.....(3,000 sqft)

- Entry / Circulation
- Washroom, Storage



Concept / Parti Drawing

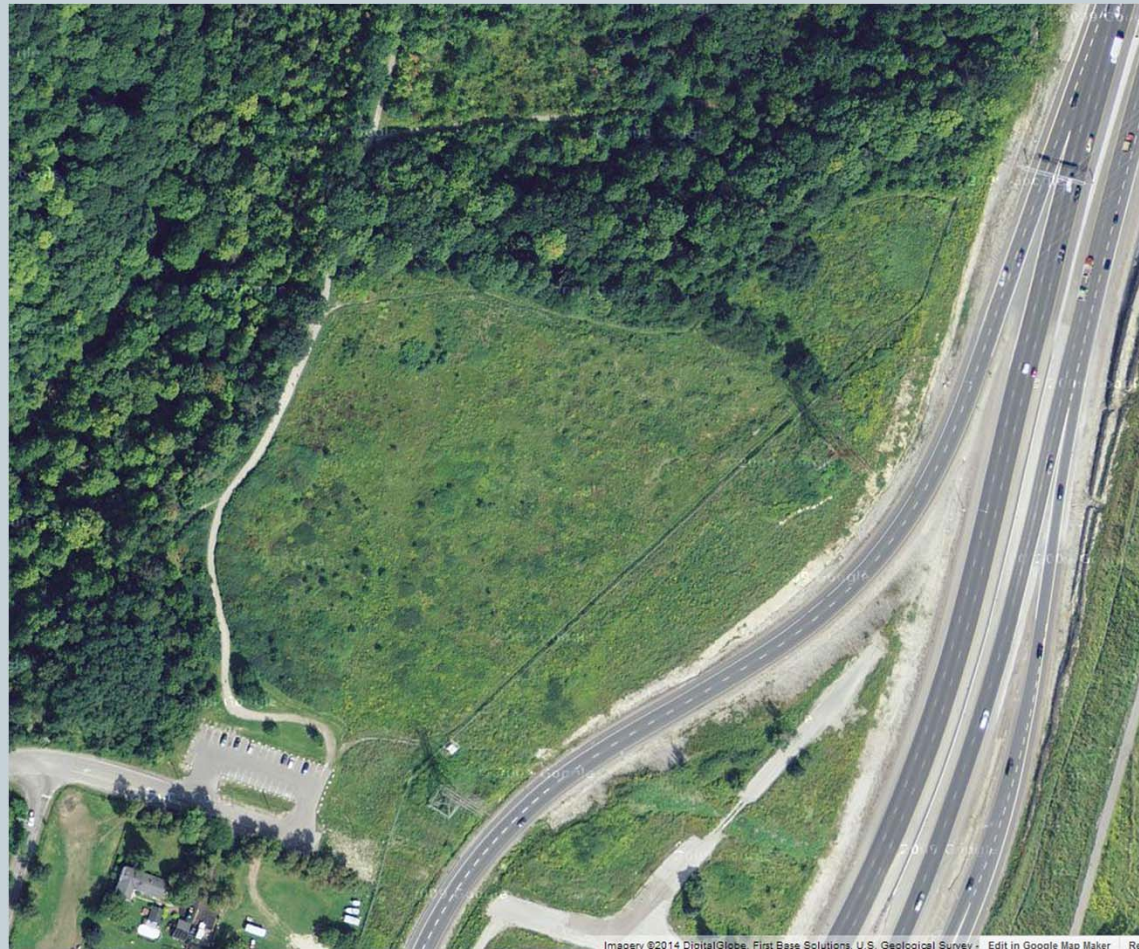


Site Selection / Assessment



- **ONE –** Mud Road
- **TWO –** Carmen's
- **THREE –** Eramosa Karst
- **FOUR -** Blacksmith
- **FIVE –** King's Forest Golf Course
- **SIX –** St. Christopher's School
- **SEVEN –** Red Hill Bowl

Preferred Site – Mud St.



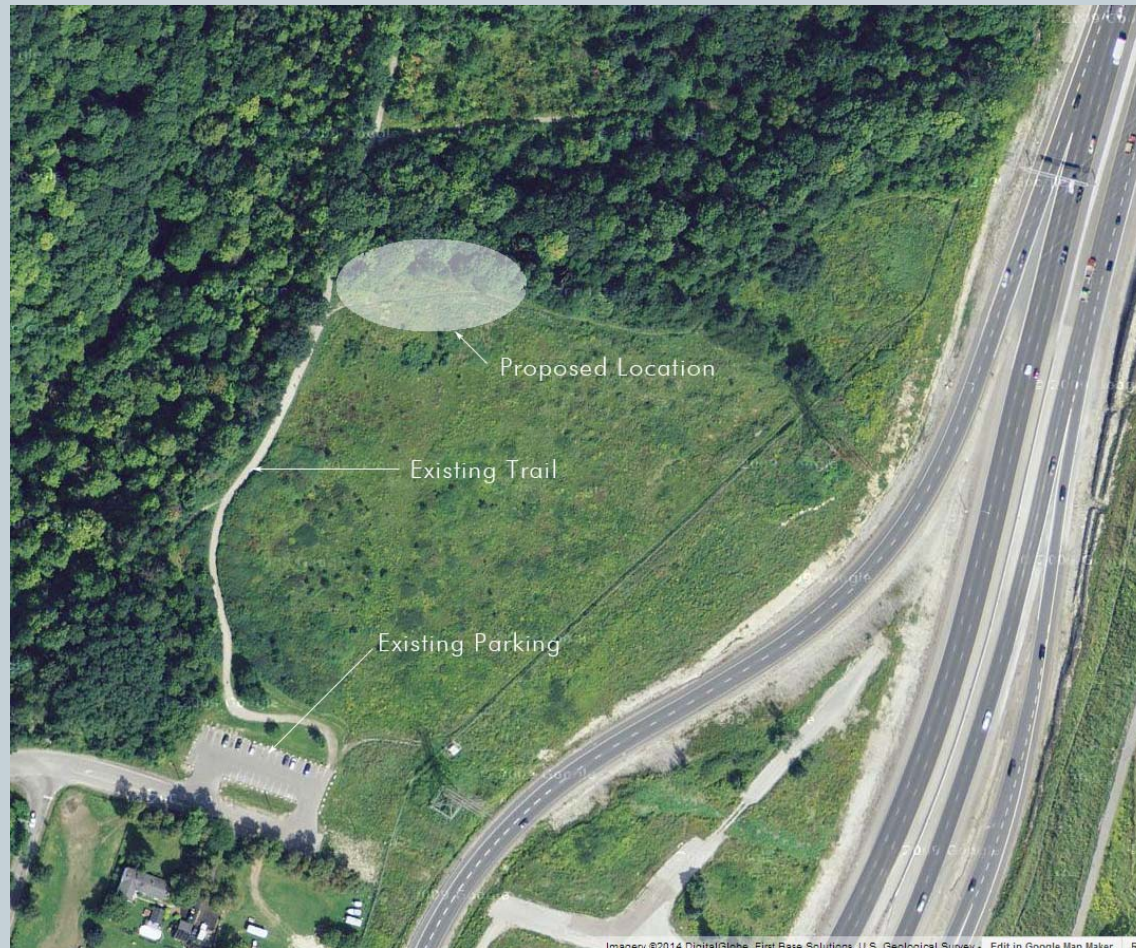
Imagery ©2014 DigitalGlobe, First Base Solutions, U.S. Geological Survey, Edit in Google Map Maker, Rec



Joint Stewardship Board



Study Area



Imagery ©2014 DigitalGlobe, First Base Solutions, U.S. Geological Survey, Edit in Google Map Maker, Red



Joint Stewardship Board



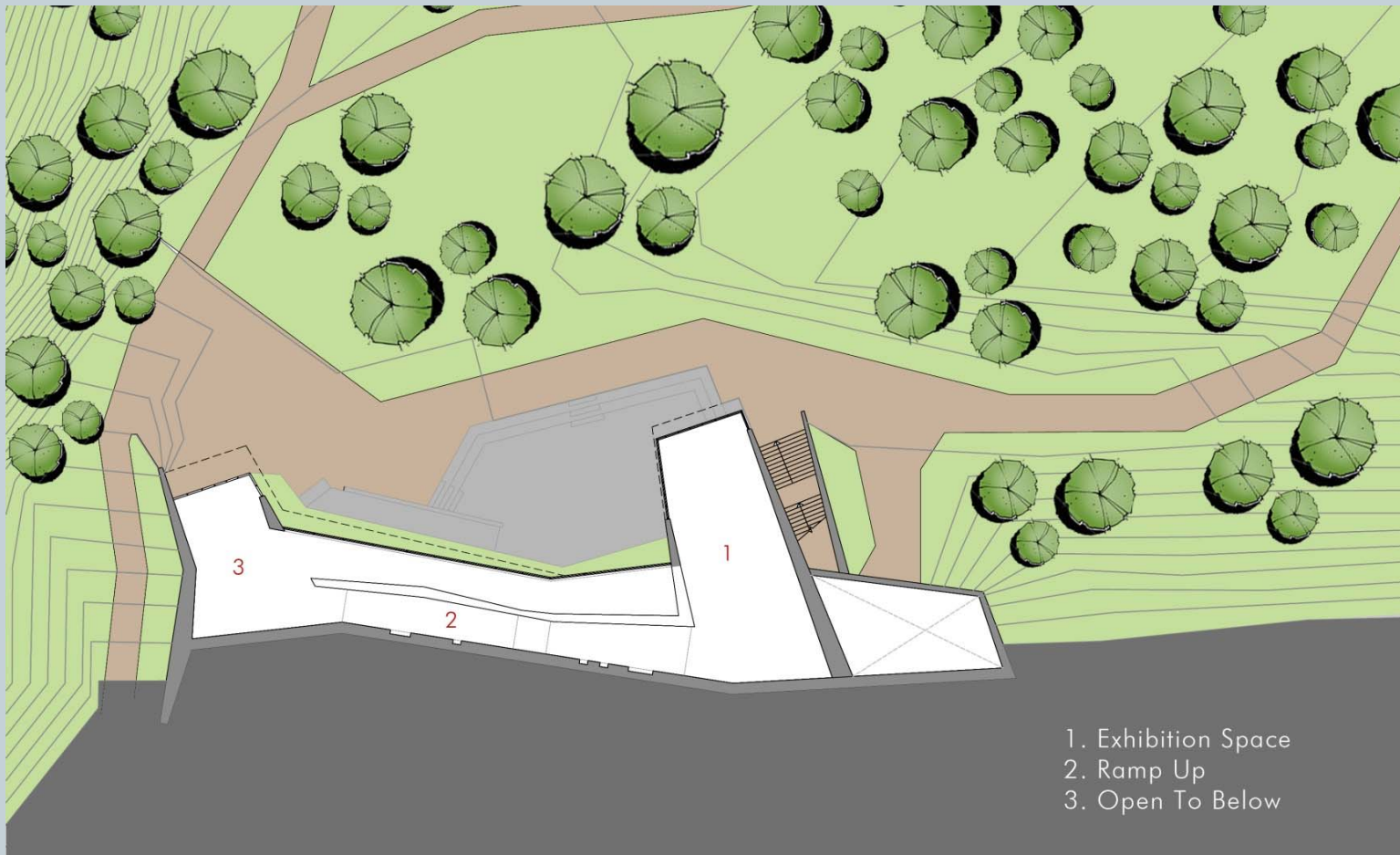
Site Layout



Floor Plan Level 1



Floor Plan Level 2

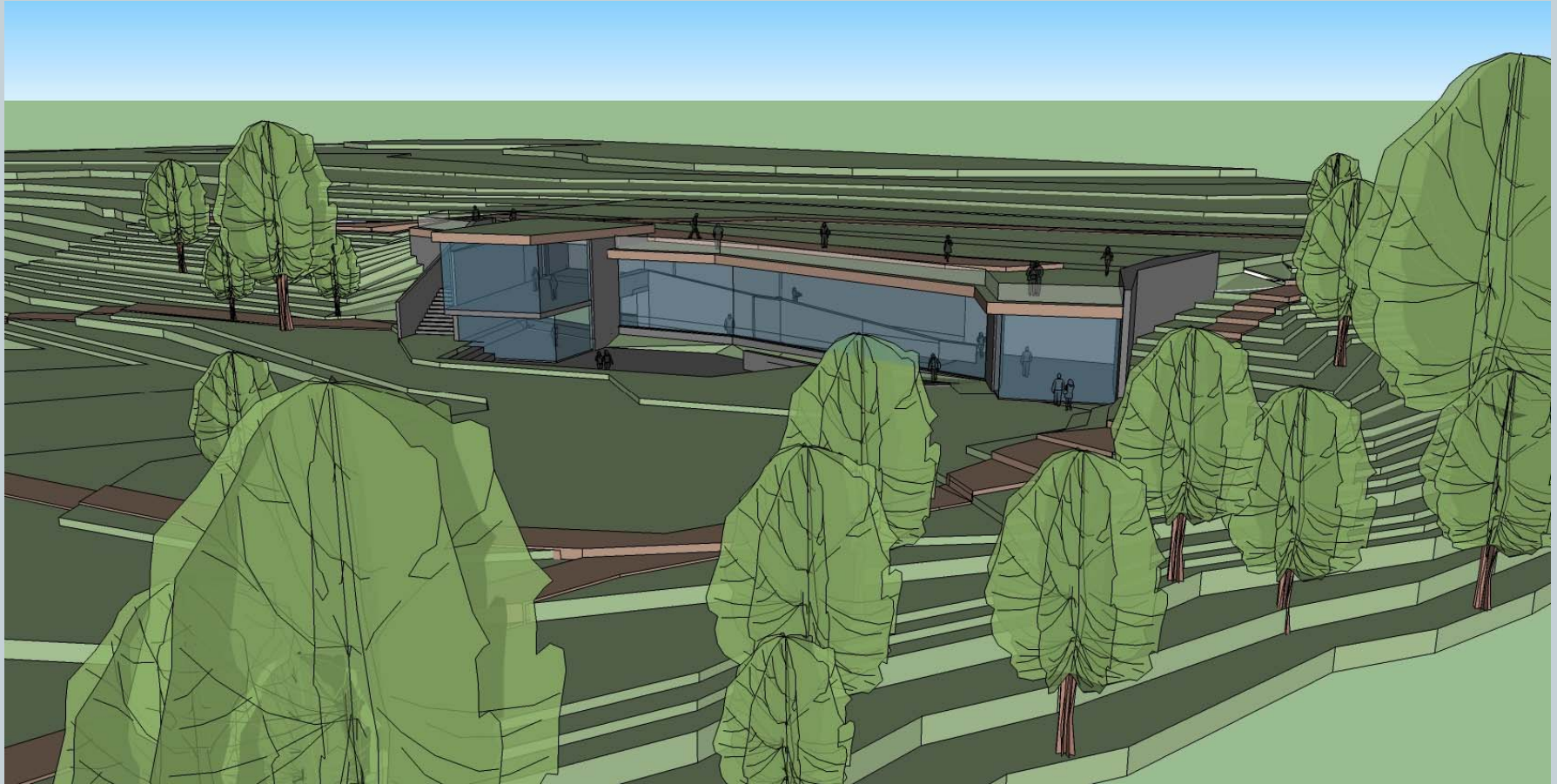


- 1. Exhibition Space
- 2. Ramp Up
- 3. Open To Below

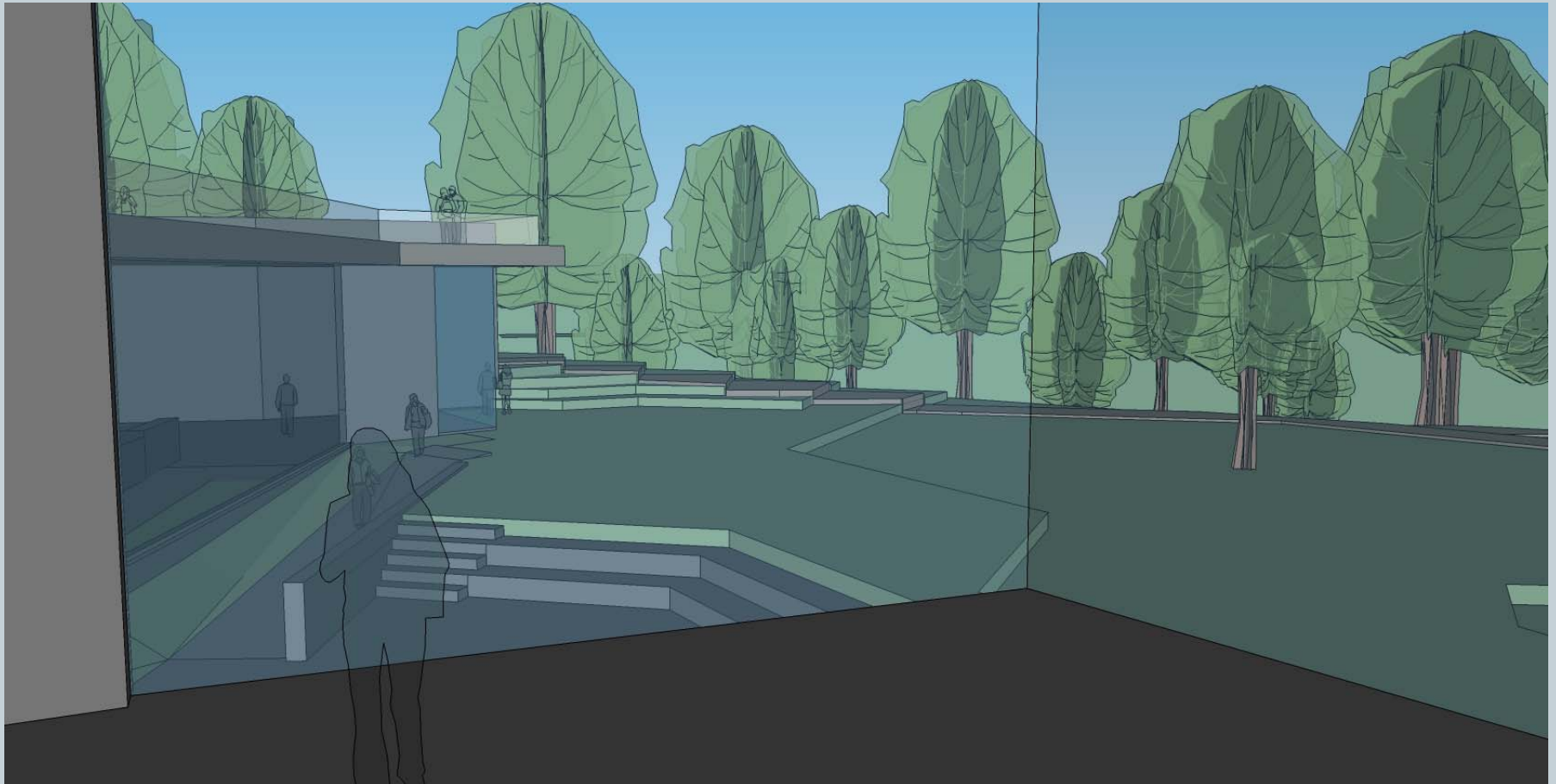
View Looking North



View Looking South



Interior View (West)



Next Steps



- Design Brief
- Cost Estimate
- Renderings



Joint Stewardship Board

tillmann
architects ruth
robinson

