



Environmental Interpretive Centre Potential Sites

October 2013

Photos and location visuals to accompany evaluation matrix

Location of Sites Visited

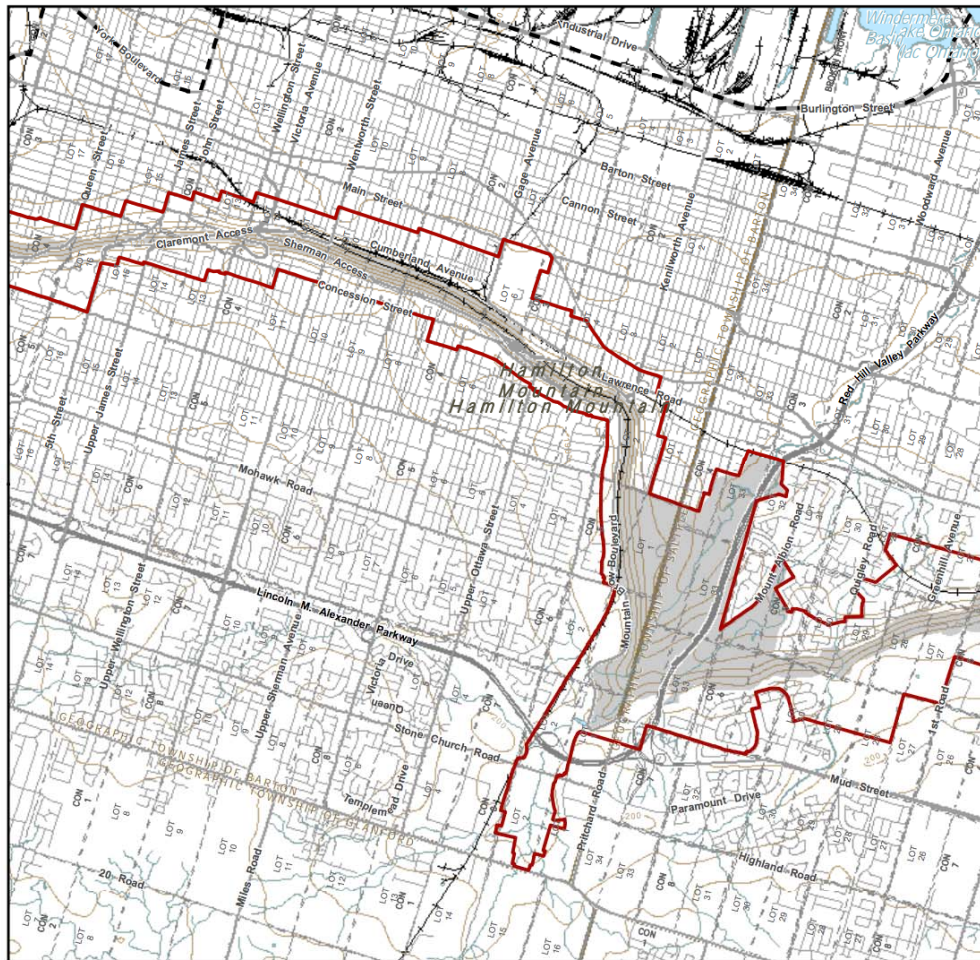


NEC NIAGARA ESCARPMENT PLAN BOUNDARY

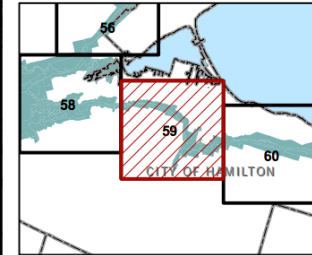
http://www.escarpment.org/files/file_dc_planning_area_map59.pdf

Area of Development Control - Excerpt of Niagara Escarpment Plan Map 2

Map No. 59



CITY OF HAMILTON



- Niagara Escarpment Plan Boundary
- Niagara Escarpment Planning Area Boundary
- Minor Urban Centre (Boundary Defined)
- Contours (10 metre intervals)

THE NIAGARA ESCARPMENT PLAN 2005
APPROVED and ORDERED June 1, 2005
O.C. # 912/2005
Amendment Consolidated to 2012

NOTE: The Area of Development Control shown on this map is drawn for convenience only. Please refer to the appropriate Ontario Regulation for an accurate description.

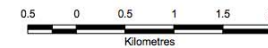
This map should not be relied on as a precise indicator of routes or locations, nor as a guide to navigation.
The Niagara Escarpment Commission (NEC) nor the Ontario Ministry of Natural Resources (OMNR) shall not be liable in any way for the use of, or reliance upon, this map or any information on this map.

Base Data: OMNR, Natural Resources Values and Information System (NRVIS)
Niagara Escarpment Plan Data: NEC

Coordinate System: NAD 1983 UTM Zone 17N

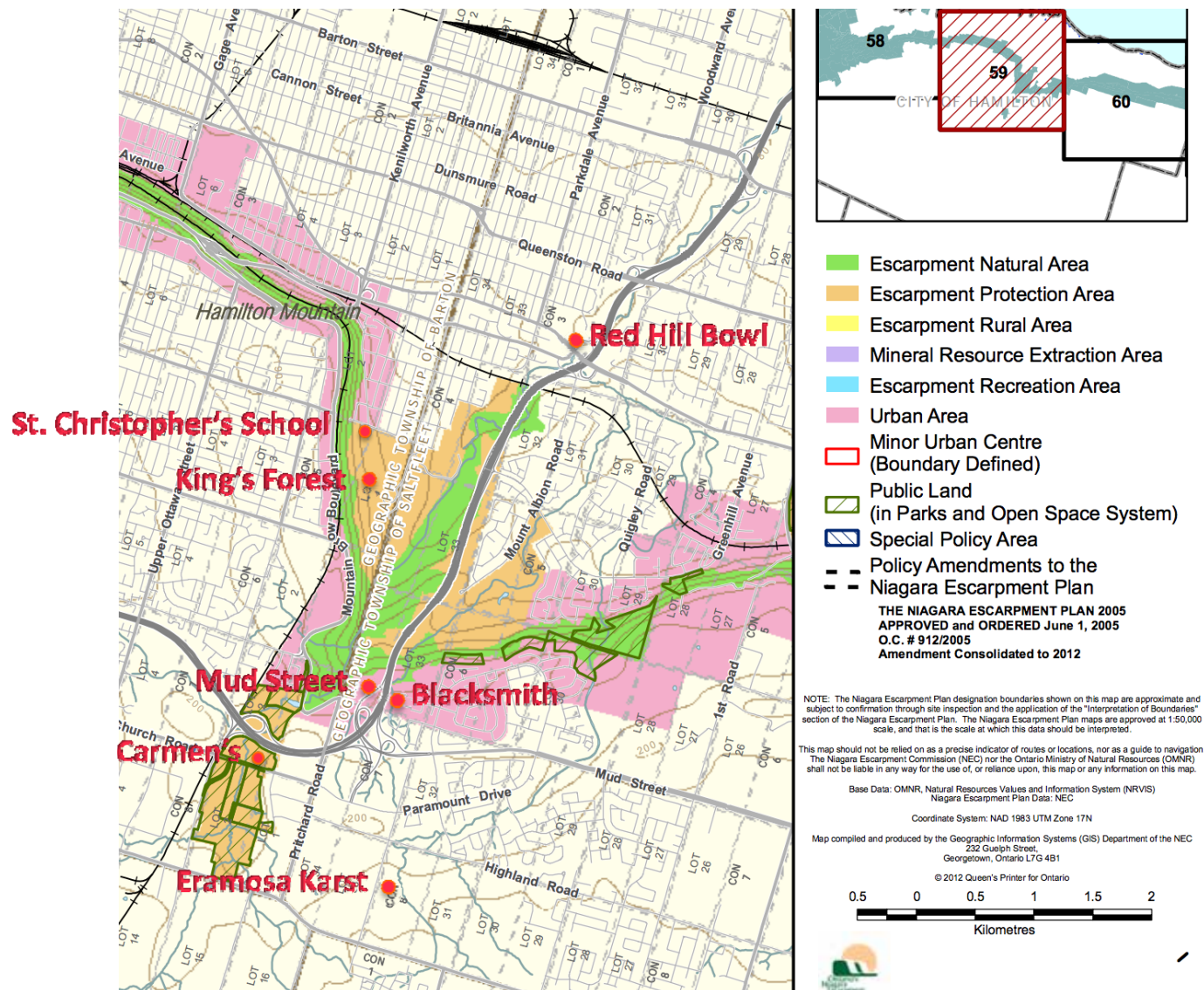
Map compiled and produced by the Geographic Information Systems (GIS) Department of the NEC
232 Guelph Street
Georgetown, Ontario L7G 4B1

© 2012 Queen's Printer for Ontario



SITE LOCATIONS AND NEC PLAN DESIGNATION

http://www.escarpment.org/ files/file_nep_map59.pdf



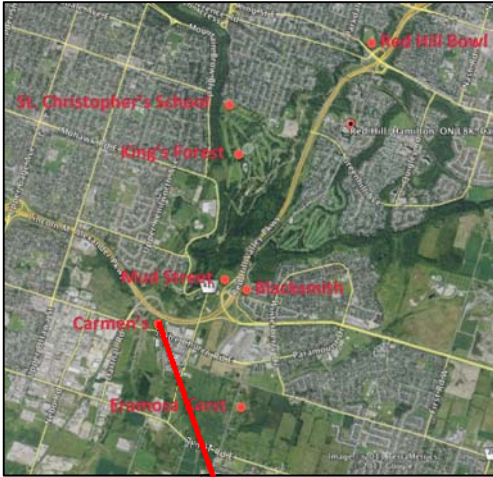


Mud Street

<http://goo.gl/maps/vYZlo>

NEC Designation: Urban Area

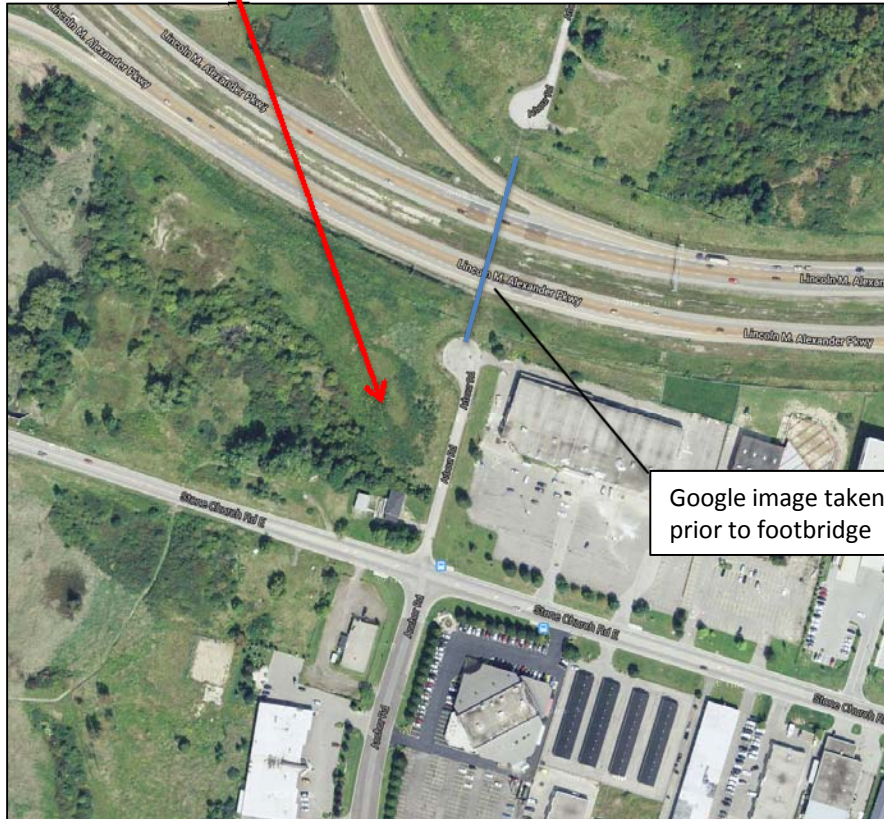




Carmen's Area

<http://goo.gl/maps/H6Xza>

NEC Designation: Public Land



Google image taken
prior to footbridge

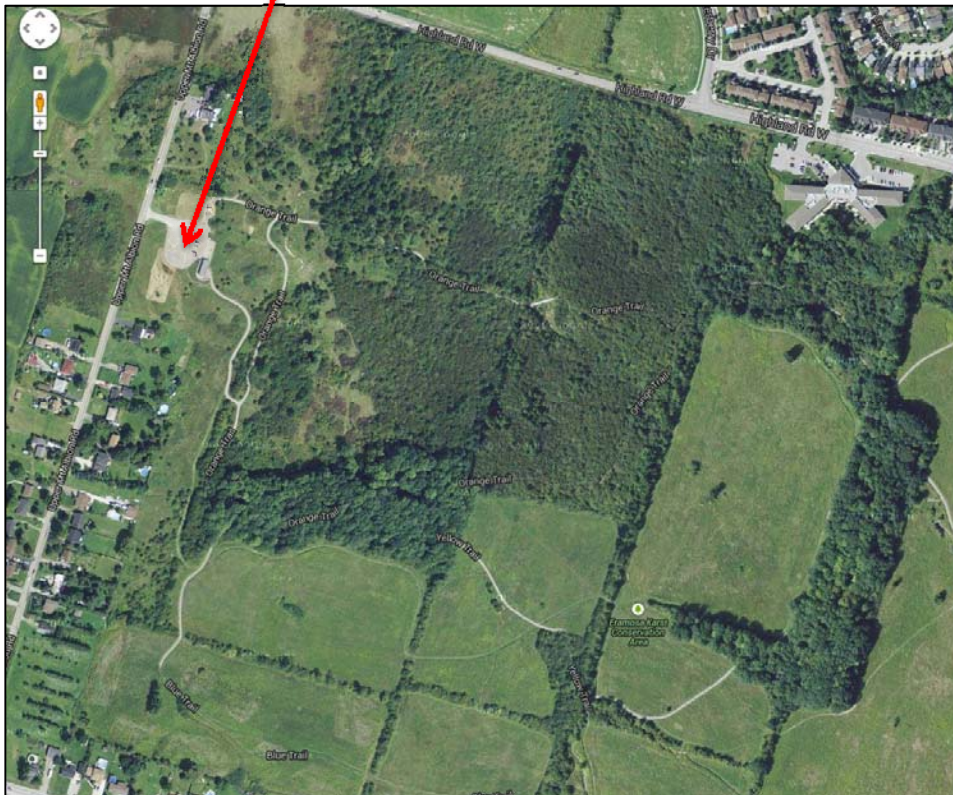




Eramosa Karst

<http://goo.gl/maps/i9nVi>

Outside of NEC Plan





Blacksmith Shop

<http://goo.gl/maps/1LyVx>

NEC Designation: Urban Area

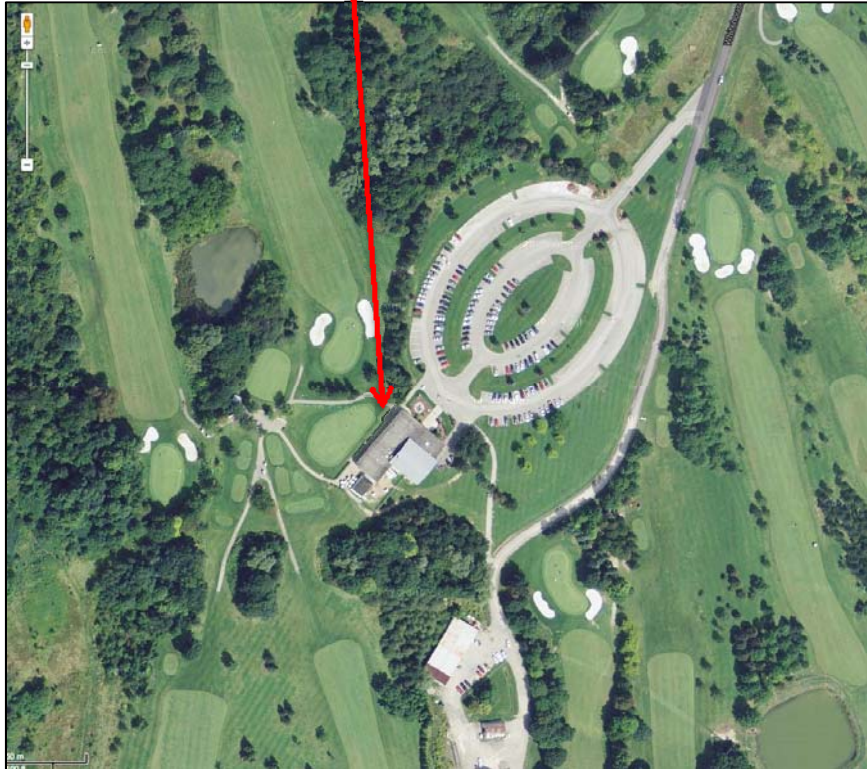


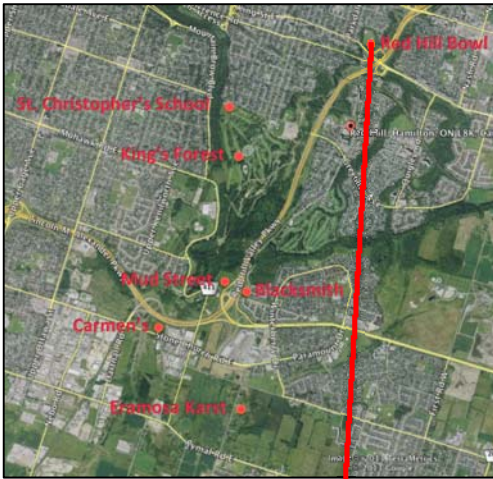


King's Forest

<http://goo.gl/maps/Z2sW1>

NEC Designation: Escarpment
Protection Area





Red Hill Bowl

<http://goo.gl/maps/kvuk8>

Outside of NEC Plan



Parking lot on south side of King St.

