

RED HILL VALLEY INTERPRETATIVE CENTRE

# DESIGN BRIEF



# TABLE OF CONTENTS

Red Hill Valley Interpretive Centre Design Guide

## EXECUTIVE SUMMARY

### 1.0 Concept Design

- 1.1 Concept Design: A Framework for Design
- 1.2 Site Section
- 1.3 Refinement of the Design – Linking the Concept Design to Location
- 1.4 Drawings

## EXECUTIVE SUMMARY

In creating the Red Hill Valley Interpretive Centre, the Joint Stewardship Board tells a story of the changes in the world that they envision. The Centre will be a story of the communities that share a history in the Valley, the values that bind our communities together and our path to a resilient future. Here, exchange and engagement foster the potential in us to understand that...

*...we are connected to a community, but a community that transcends time.*

**Rick Hill Sr.** (Tuscarora)

Chair, Haudenosaunee Standing Committee on NAGPRA

As you consider this Design Brief, we ask that you deem the Interpretive Centre as a living portal in the exchange of ideas, discourse, research, creativity, and discovery. The Red Hill Valley is a rich network of natural systems ready to transform auspicious relationships into unique opportunities for our communities' participation. Gathering, learning and meditation, collaborations, forums, training opportunities, speakers, and inventive partnerships will introduce new ideas and connections. We use the analogy of a bridge to describe these connections.

*We are the bridge between the past and the future of the Red Hill Valley. We stand here together, to share with each other our stories of the past told in the landscape. Embodied in the valley is a reciprocal relationship between this earth and generations before us. We look to the past, to reflect on our ancestors' experiences, to breathe new life into our inheritance by adding our own thoughts and experiences in the present. In facilitating a deeper, understanding of our place in the world, the Centre translates experiences into a shared universal visual and physical language that can be felt.*

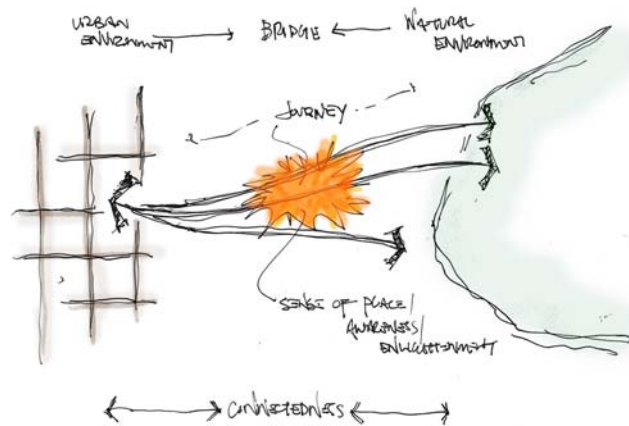
In this document, the Joint Stewardship Board along with architects Tillmann Ruth Robinson propose a framework to develop a new and worthy destination in the Red Hill Valley. What follows is a description of our intent to bring the experience of the Valley to life. We will outline this intent through a creative process summarized by our Concept Design (A Framework for Design).

# 1.0 CONCEPT DESIGN

## 1.1 Concept Design: A Framework for Design

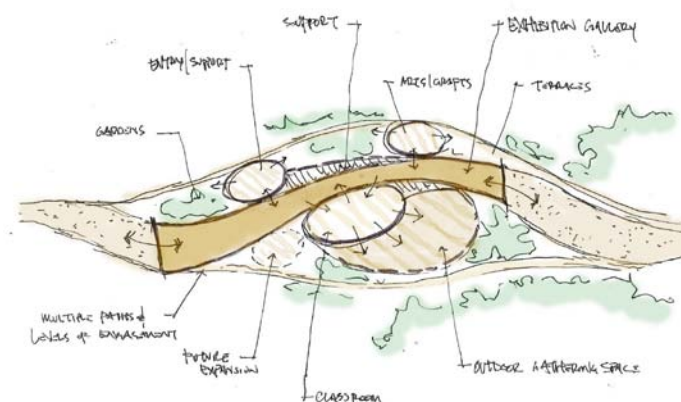
The Part – the generator of the Concept Design, is a simple diagram conveying the primary organizing thought or the main idea of the project – the bridge, or journey between urban and natural environments experienced over time – expresses a series of components exploring the site through an experience we describe as:

- the bridge, path and spine;
- a series of linked program modules along the spine;
- suggested connects across and through the site and into the Valley;
- enclosing garden and landscape elements and;
- physical representation of a journey between urban and natural environments experienced over time.



Parti

A general Concept flows from the Parti:



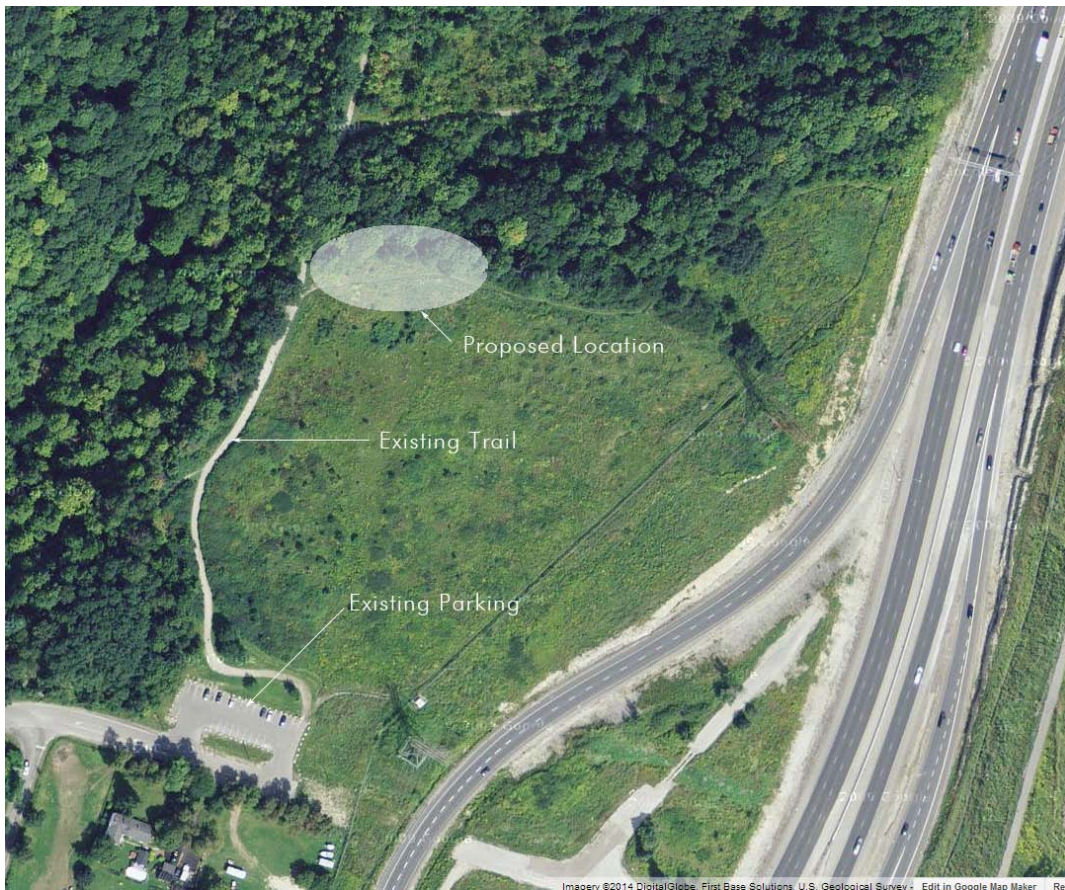
Concept Plan



# 1.0 CONCEPT DESIGN

## 1.2 Site Selection

The **Mud Street** site was selected for testing the Concept Design as it meets a number of selection criteria. The site can accommodate 1+ acre required, it is a well-treed natural area. There is water, sewer, and hydro servicing within 100 m, and close access from both the LINC and RHV Parkway. This site has the added advantage of providing a view of the valley, and the facility may be visible from the RHV Parkway. There is also ample parking. The site sits at a RHV trail access point, and while there are some steep areas along the trail, there are less steep portions as well, while some of the trail is paved. The site is NEC Urban Area designated which may provide some advantages for permitting if returning the land to conservation type activities is the goal of the project.



## 1.0 CONCEPT DESIGN

### 1.3 Refinement of the Concept Design: Linking the Concept Design to Location

Elements of the Concept Design are driven by the aspirations expressed in the Vision and Principles. The following design takes these aspirations and looks at the opportunities for built form influences by the singular land forms, orientation and journey of discovery at the Mud Street site.

**The Centre is a framework that invites many levels of engagement and movement through the site.**

Visitors may choose to walk past on their way to other destinations. One can rest on one of the two outdoor decks, the first located on the grassy upper meadow or the second located below in the sheltered outdoor classroom. Or, travel through the building itself along a ramp that gently guides visitors between levels where framed views and Centre programs are visible.

**The Centre is truly connected to the site and integrated with the natural patterns it embodies.**

Here on the Mud Street Site, the Centre takes advantage of the drop between the meadow at the trail's entry and the slope into the Valley. Tucked into a rocky ledge, the only evidence of this building are the sloping and accessible grassed roofs. Once inside or below the meadow, the Centre opens onto the beauty of the Valley, using the geometries and materials around it as precedents for its character.

**The Centre expresses, through modest and respectful building, our responsibility to the land and those yet to come. Spaces are dynamic and adaptable with a responsible use of available resources and materials.** The small footprint of built space is configured to maximize flexibility and adoptability in the use of indoor and outdoor classrooms and exhibition space. In tucking the building into the sloping landscape, the Centre incorporates passive strategies for sustainable design.

# 1.0 CONCEPT DESIGN

## 1.4 Drawings



Site Plan



Lower Level



# 1.0 CONCEPT DESIGN

## 1.4 Drawings



Upper Level

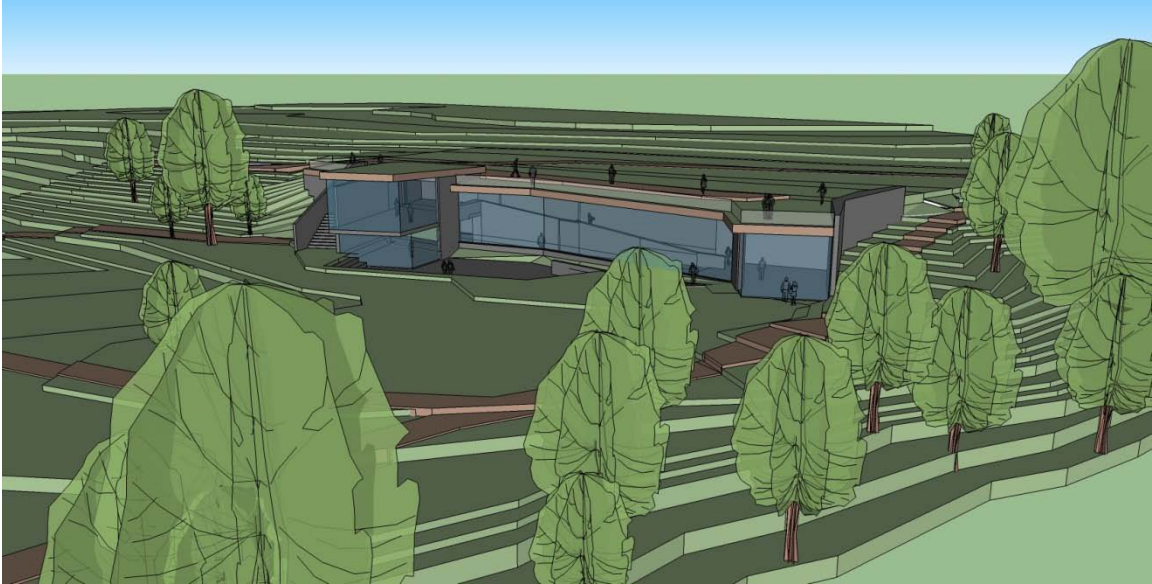


View from the Meadow at the Trail Entrance (looking north)

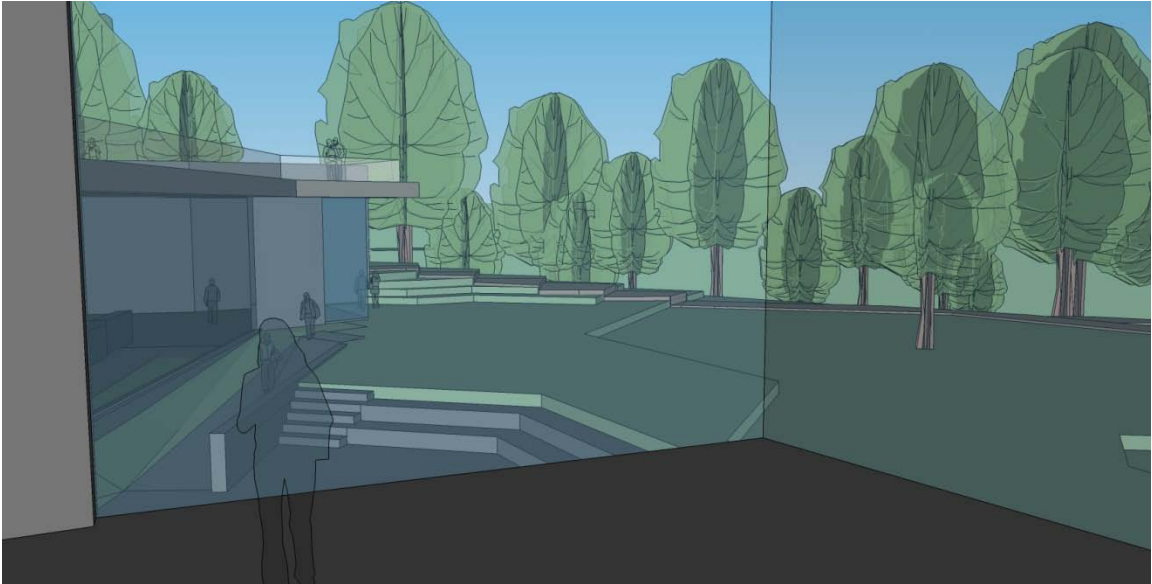


# 1.0 CONCEPT DESIGN

## 1.4 Drawings



View from the Valley (looking south)



View from Inside the Centre (looking north to the Valley)