

Item 2. Changes to Agenda

Item	Topic	
1	Opening	
2	Changes to the Agenda	
3	Approval of Minutes from March 25, 2014 (<i>See attached minutes</i>)	
4	Coordinator Report	
5	Discussion Items	
	5.1 Bear Meeting Place	
	5.2 Turtle Design	
	5.3 Environmental Interpretive Centre	
	5.4 Tree Planting	
	5.5 Archaeology Discussion	
	5.6 Others?	
6	Next Meeting Date	
7	Closing	

Item 4. Coordinator Report - Highlights

- **Archaeological Display**
 - April 7 to May 16 COH and May 20 to June 27 Six Nations
 - Promotion, media, and follow up - including archaeology material upload on web site
- **Reporting**
 - **COH GIC** - Wednesday April 16
 - **HCCC – Saturday June 7**
- **Ecological Restoration**
 - On-site restoration assessment with Kayanase – April 3
 - Follow up visit to Bear for plant growth – May 22
 - Assisted with proposal development for tree planting in valley
 - Obtained quotes from Kayanase for
 - Bear maintenance and seeding, and
 - Full valley survival assessment and recommendation on invasive species (from current JSB budget)
- **Community Engagement – showcasing JSB activities and experiences**
 - **Six Nations Polytechnic** – Mohawk College staff – April 1
 - **Earth Day Event** – Six Nations - April 17
 - **Sacred Water Circle, Invited Panelist**, Trent University – May 2
 - **Community Awareness Week, Six Nations** – May 23
 - **COH Aboriginal Advisory** – Thursday June 5
 - **Invited to speak GroundSwell Conference, University of Guelph** – Tuesday June 17

Item 4. Coordinator Report – Highlights... continued

- **Environmental Interpretive Centre** – awaiting direction following preliminary investigation
- **Bear Sign**
 - Provided sample content to *Fontasy Signs and Displays* – awaiting quote for design, manufacturing and installation
 - Received narrative from Rick Hill – forwarded to Haudenosaunee for input
 - Met with a trail sign illustrator (May 16) – received quote for illustration and design
 - Met with Arnold Jacobs for illustration (May 23) – awaiting quote and sample illustrations and design recommendations
- **Turtle Meeting Place**
 - Contacted City staff for update and requested anticipated timelines
 - Will establish plan and execute further action as recommended by city staff and board
- **Annual Report Mail Out - NEC, Environment Hamilton, and Hamilton Conservation Authority**
 - Received email reply from HCA Vice Chair, Jim Howlett
- **Office and Board** - finance, minutes, JSB meeting prep and follow up on action items from February meeting

Item 5.1 Bear Meeting Place

Update:

- a) Signage
- b) Site Maintenance
- c) Official Opening





Title: The Bear Meeting Place

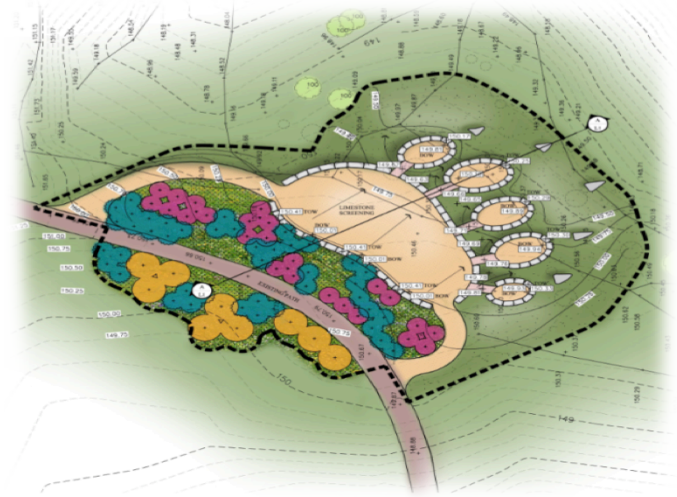
Bear Paw Gathering Place
Draft: April 6, 2014

The Seneca Nation has a story of a giant bear called *Nia'gwahe* that once roamed these lands. Seldom seen, the bear always left his big footprints on the landscape. To both the Haudenosaunee ('People of the Longhouse') and the Anishinabek ('Original People') people who travelled through this valley, the black bear is a symbol of strength and power, often associated with spiritual medicine. Among the Mohawk, the black bear, named *okwari*, is one of three family clans, along with the Wolf and Turtle.

There is another story of a great celestial bear that is pursued across the skies by hunters. They have wounded the bear with their arrows, but they can never seem to catch up to him and chase him endlessly. Wherever the wounded bear is directly overhead, blood from his wound drips down on the trees and changes the leaves from green to the bright colors of autumn, signaling to the hunters on earth that it is time to begin the hunting season. When you see the Big Dipper overhead, the Seneca say that the four stars in the dipper represent the four legs of that bear, and the three stars in the handle are the pursuing hunters.

Imagine that you are in an old hunting party and have come across this giant footprint. It is time to pause, reflect, and share your stories, or simply enjoy the view. While the bear has left his footprint, we have to more careful about what we leave behind, so please remember to keep this place clean.

jointstewardshipboard.com



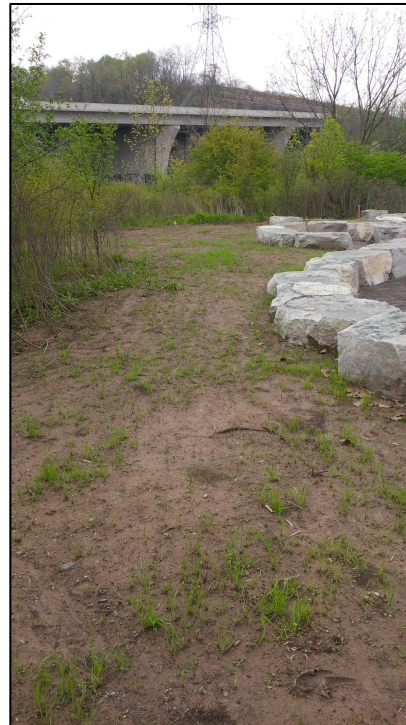
Artistic interpretation from
 Arnold Jacobs



Shall I proceed and report back with design?

b) Bear Maintenance

- Site visit last week to assess success of plantings



Questions for discussion:

- Process and planning for site maintenance?
- (re-seeding and garbage can)
- Original estimate 1 day plus seed and/or small plug stock
- Investigate further?

c) Official Opening

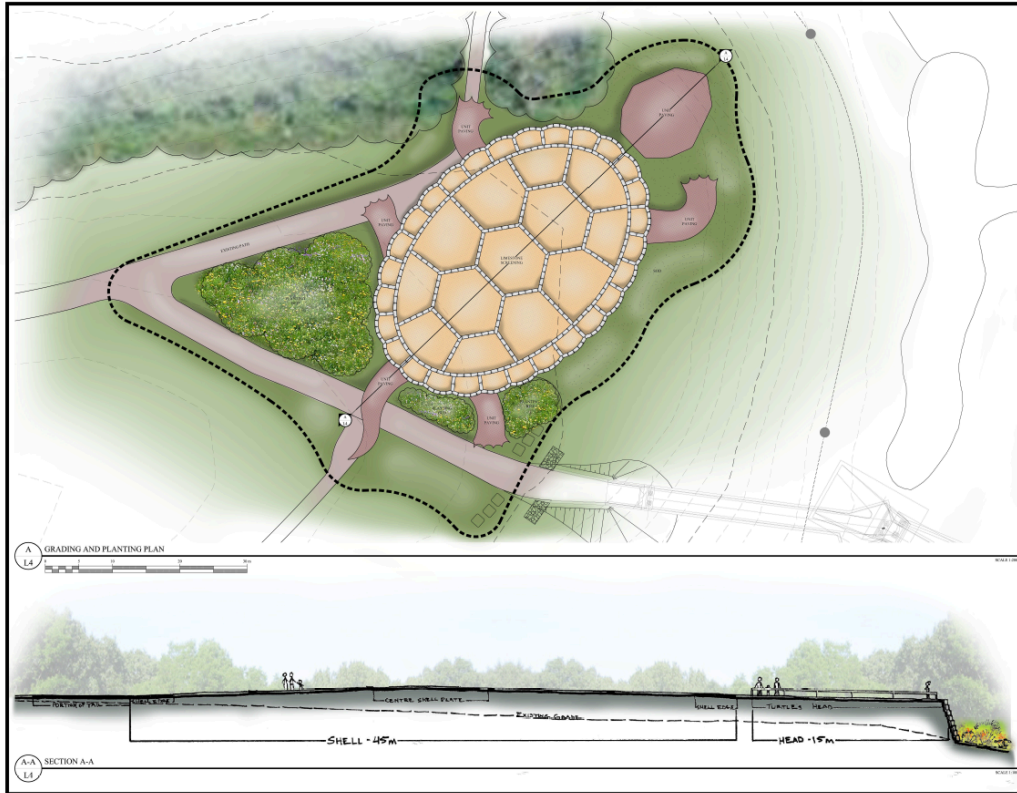
- Prior to sign completion?
 - Early summer → July
- or
- After sign completion?
 - Later summer → August

Questions for discussion:

- When to schedule the official opening?
- What should the opening involve and who?
- Who is city staff designated contact to assist with logistics?



Item 5.2 Turtle Design



Update:

- November presentation by COH Landscape Architecture
- **November Decision:**
 - Re-scaling to comparative size of Bear
 - Using Snapping Turtle design
 - Complete detailed designs in 2014
 - Allocate detailed design in 2014 JSB budget
- **Recommend:** Provide Board anticipated timelines including tender for detailed designs once available.

Item 5.3 Environmental Interpretive Centre

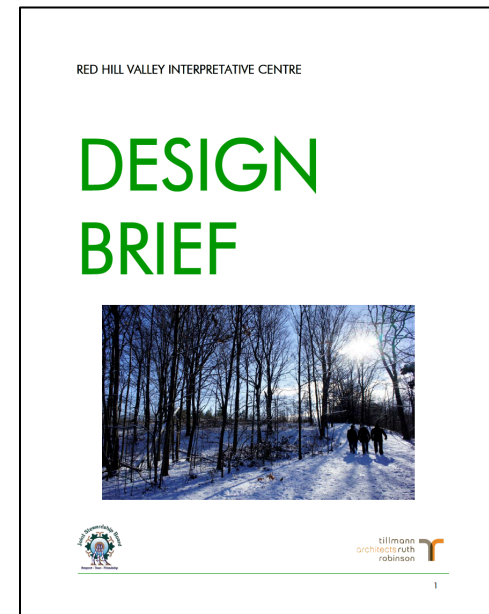
Update:

- Final Conceptual Design presented by ATRR in January 2014
- Detailed Design Proposal from ATRR provided in January 2014, including:
 - A) Floor Plan and Program Summary
 - B) Building Elevations
 - C) Building Section
 - D) Renderings
 - E) Design Narrative

Decision: Await approval until city site

Investigation addresses feasibility and site questions.

- Question: Next steps?



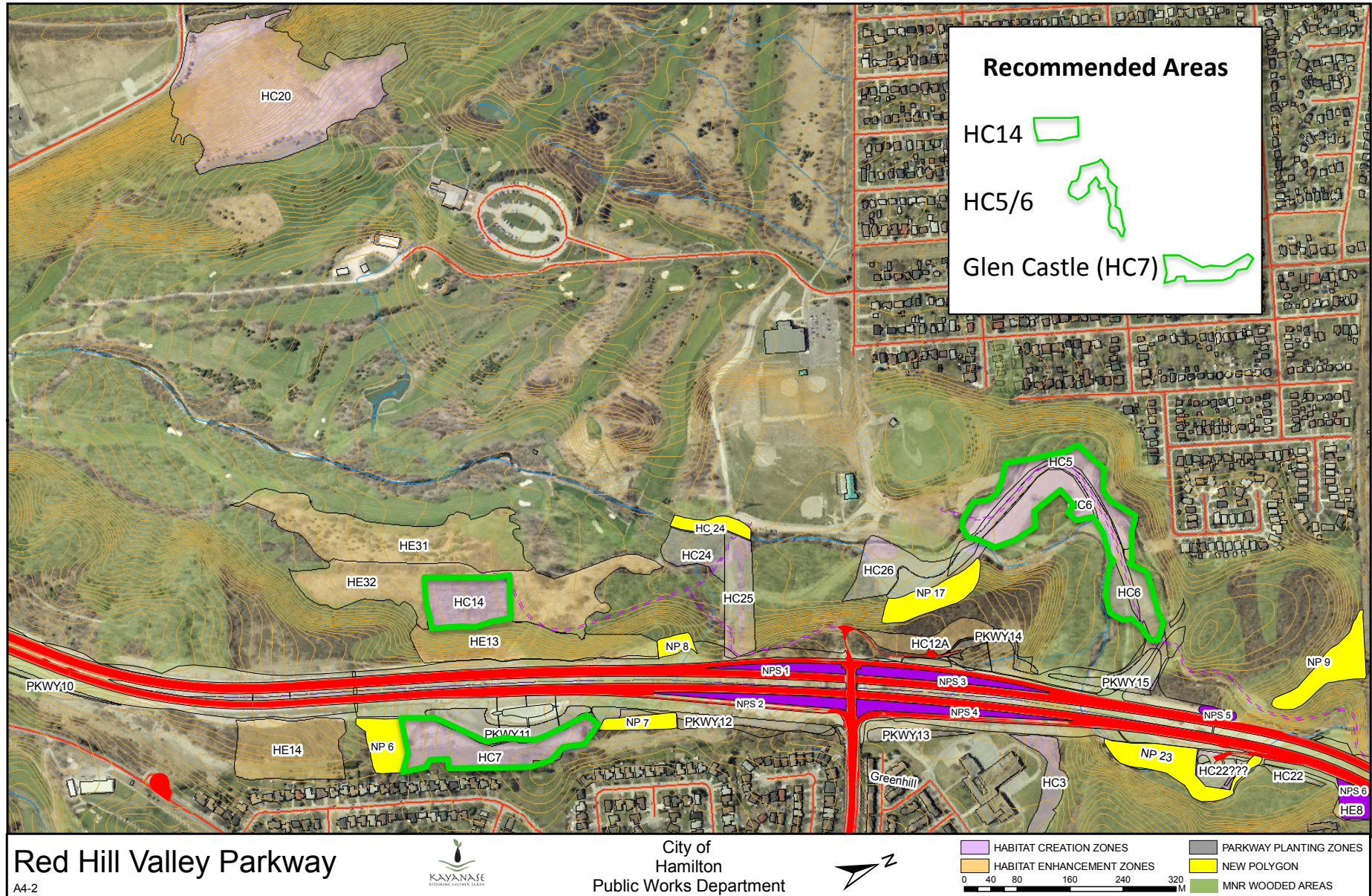
Item 5.4 Tree Planting

Update:

- Proposal for tree planting as requested by Cllr Collins
- Field site assessment – determined 3 areas
- Proposal submitted to the city
- Motion was approved at Public Works May 22nd and will be presented to City Council this week

Question: Given the end of 5 year environmental review period, is it worthwhile to conduct a full assessment of the valley to determine survival rate, extent of invasive species, and recommendations to support long-term planning?

Map 1: Location of Recommended Planting Areas



Item 5.5 Archaeology Discussion

Item 5.6 Others